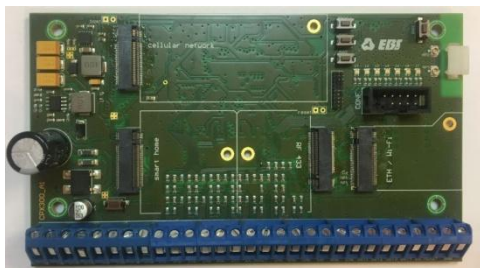


# CPX300W



## DATA SHEET of AVA PRO Alarm control panel



EBS Sp. z o.o.  
59 Bronislawa Czecha St.  
04-555 Warsaw, POLAND  
E-mail: [sales@ebssmart.com](mailto:sales@ebssmart.com)  
Technical support: [support@ebssmart.com](mailto:support@ebssmart.com)  
Webpage: [www.ebssmart.com](http://www.ebssmart.com)

Available transmission channels depending on the used module	GPRS/UMTS/LTE, SMS with MOD-GSM
	ETHERNET with MOD-ETH
	WiFi with mode MOD-WIFI
Transmit frequency	868 MHz - two-way transmission with onboard module (supporting antenna diversity)
	optionally 433 MHz - one-way transmission with MOD-RF433
Power supply voltage	18 V AC (16-20 V AC)
Transformer power required	min. 20 VA
Power consumption (medium / maximum)	3 W / 20 W@230 V AC
Battery charging current	max. 350 mA
Charging voltage	13.8 V
Supported batteries	lead-acid 12 V
Low battery signalling voltage	11 V
Battery disconnection voltage at too low capacity	below 9 V
Environmental class according to EN50130-5	II
Security grade according to EN50131-1	Grade 2
Wired zones	8
Wired zones type	NO / NC / EOL-NO / EOL-NC / DEOL-NO / DEOL-NC / TEOL
Wireless zones	64
Supported wireless devices (868 MHz)	PIR-30, PIR-CAM-30, MC-30, STAG-30 (AVA KEY), RC-30
Supported wireless devices (433 MHz) only with MOD-RF433	MC-10, MC-11, PIR-10, PIR-11, MD-10, GB-10, SD-20, GS-21, GS-22
Response types of zones	<ul style="list-style-type: none"><li>- instant</li><li>- delay</li><li>- 24h burglary</li><li>- arming/disarming by violation</li><li>- 24h tamper</li><li>- interior delay</li><li>- 24h burglary silent</li><li>- 24h fire</li></ul>

If you have any questions, please contact us at [support@ebssmart.com](mailto:support@ebssmart.com)

	<ul style="list-style-type: none"> <li>- perimeter</li> <li>- perimeter exit</li> <li>- 24h gas</li> <li>- 24h water leakage</li> <li>- night (bypassed)</li> <li>- night with prealarm</li> <li>- arming/disarming by state change</li> </ul>
Smart Home elements (only with MOD-ZWAVE)	possibility to add up to 16 devices communicate via Z-Wave protocol
Partitions	4
Outputs	1 monitored alarm output, OC type, high-current (max. 1,1A)
	3 monitored alarm outputs, OC type, low-current (max. 100mA)
Output functions (ways of control)	<ul style="list-style-type: none"> <li>- alarm</li> <li>- armed status</li> <li>- power supply fault</li> <li>- communication loss</li> <li>- GSM jamming indicator</li> <li>- chirp</li> <li>- alarm &amp; chirp</li> </ul>
Power outputs +13.8V	2 for external devices (max. current of each 350mA)
Number of users/remote controls/AVA KEYS	32 / 32 / 32
Number of PIR-CAM-30	max. 8
Users SMS	Yes, 10 different phone numbers
Events buffer	min. 500
Quantity of events stored in history	min. 2000
Timestamp event	Yes
GPRS / SMS transmission security	AES encryption
Buttons	5 buttons (START, ADD+, DEL-, EXIT, MODE)
Configuration	<ul style="list-style-type: none"> <li>- remote (GPRS, EDGE, HSPA+, SMS and via Web Browser with MOD-ETH module</li> <li>- local</li> </ul>
Remote firmware update	YES
Temperature range of working	from -10°C to +55°C
Humidity range of working	93±3%
Dimension PCB	151 x 87.5 x 30 mm

If you have any questions, please contact us at [support@ebssmart.com](mailto:support@ebssmart.com)